

# LONGWAVE

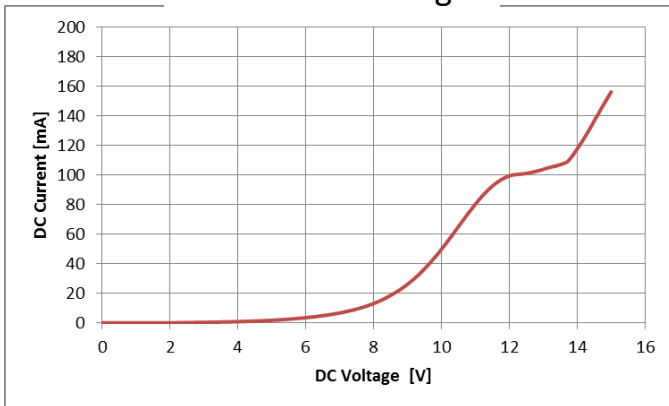
## PHOTONICS

### Data Sheet: THzQCL-Dev413-MM

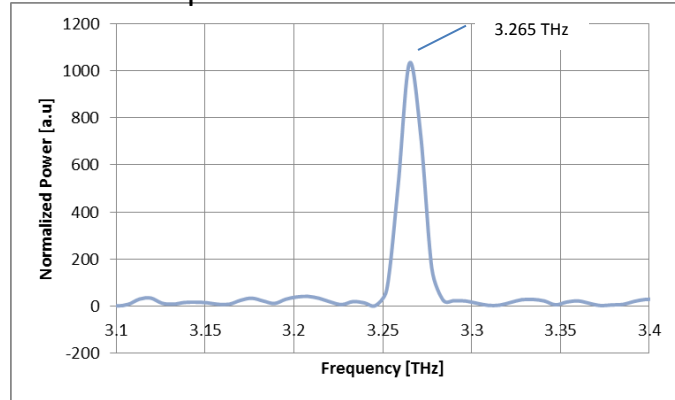
#### Description:

Device Type: Fabry-Perot with Integrated Lens  
Operating Mode: CW  
Measurement Temp: 48-49 K  
Lasing frequency: 3.265 THz (see below)  
CW Power: >6 mW (V=15.0 V, I = 155 mA)  
**Absolute Max Current: 155mA (at >15.0V)**

#### Current vs Voltage

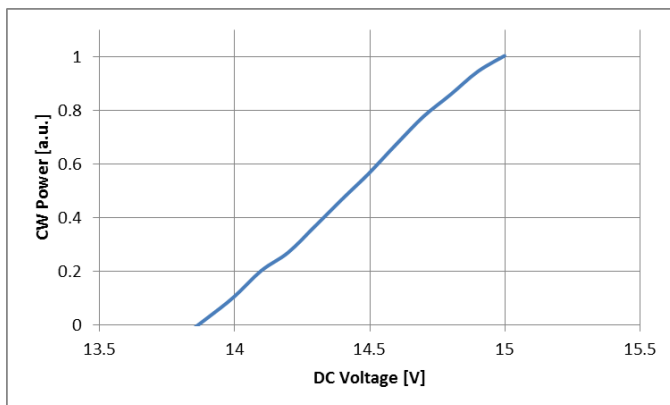


#### Spectral Characteristics

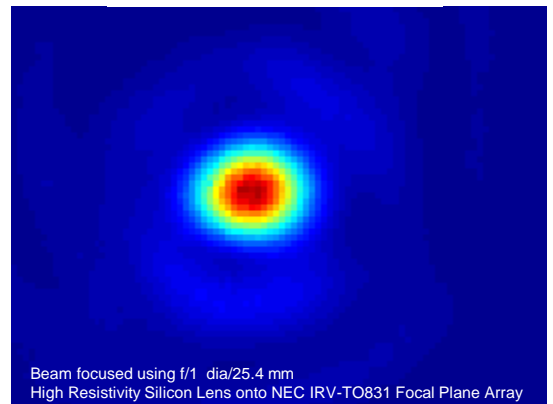


Pulse spectrum taken at 48K (V=12.8 V, I=225 mA)

#### Power vs Current



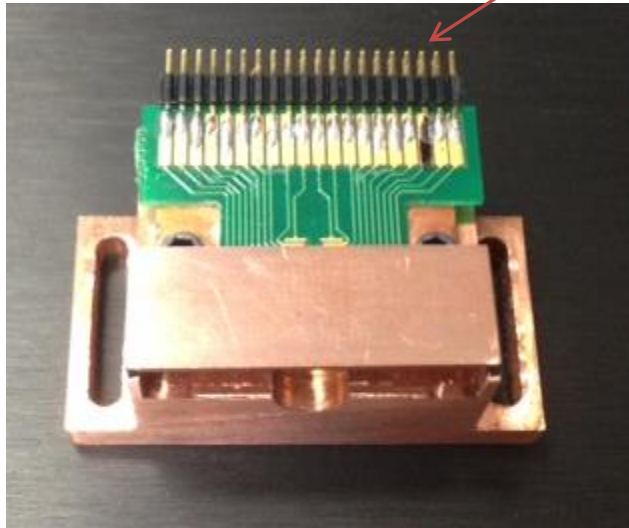
#### Focused Beam



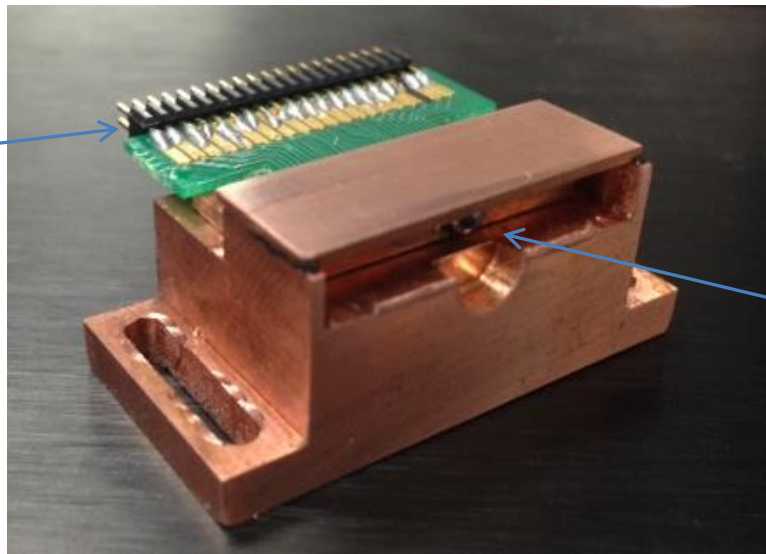
LongWave Photonics LLC  
Mountain View, CA 94043  
Contact:  
[info@longwavephotonics.com](mailto:info@longwavephotonics.com)  
Tel: (617) 399 6405  
LongWave Photonics LLC

Copyright ©  
LongWave Photonics LLC, 2014

3.26 THz Laser  
Pin 18



GND



Lens